

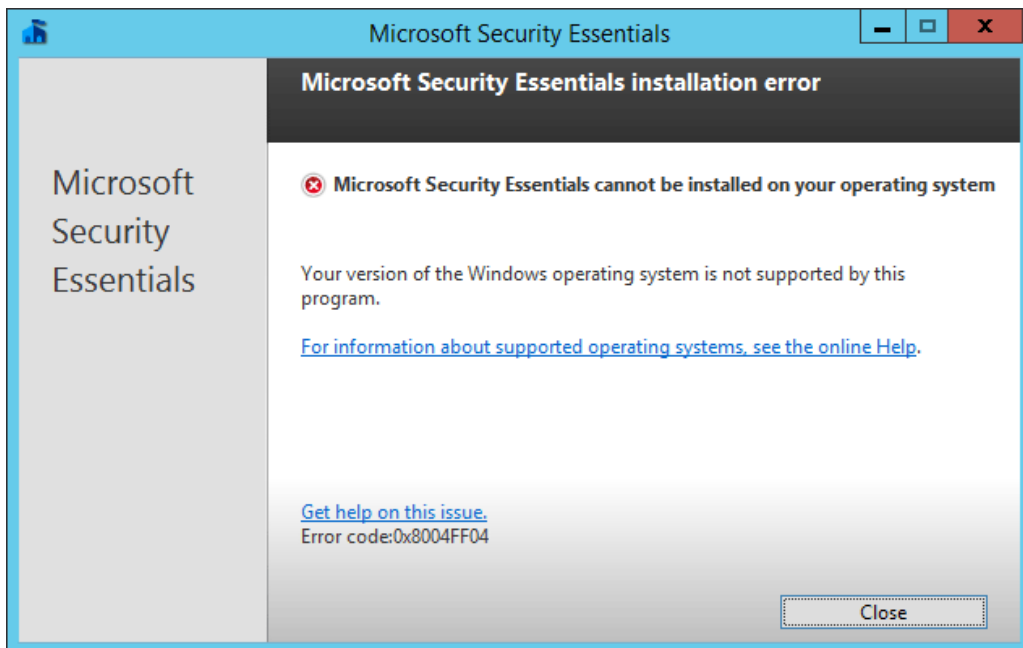
Microsoft Security Essentials Installation Guide For Windows Server

Download and Install

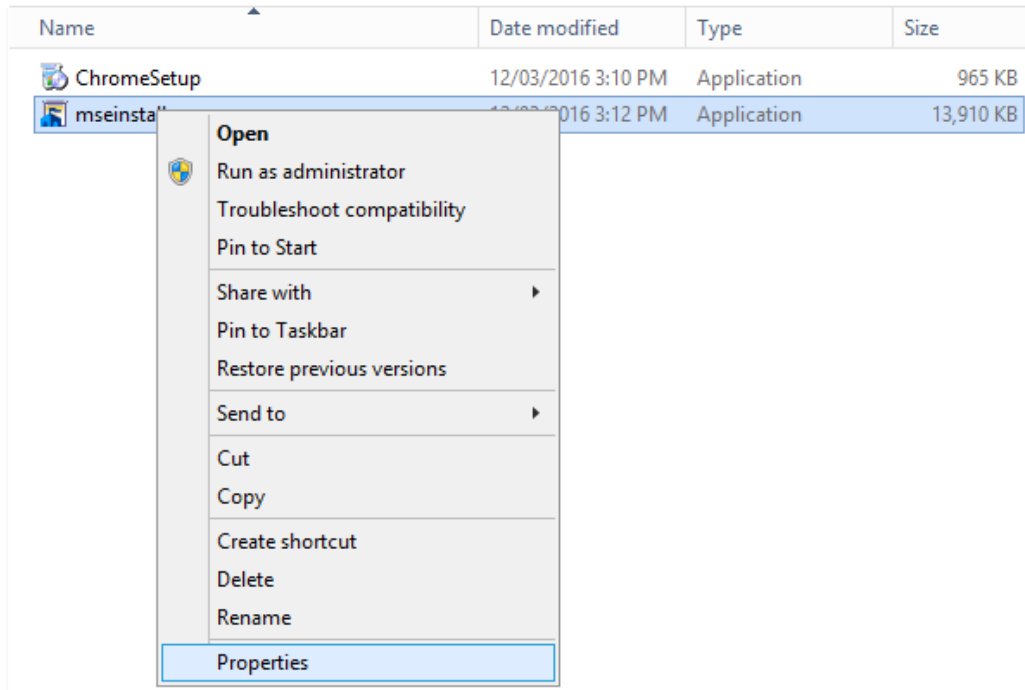
1. Firstly you'll want to [download Microsoft Security Essentials](#) onto your Windows server. Select the language of your choice and either 32-bit or 64-bit depending on the architecture your server operating system is using.



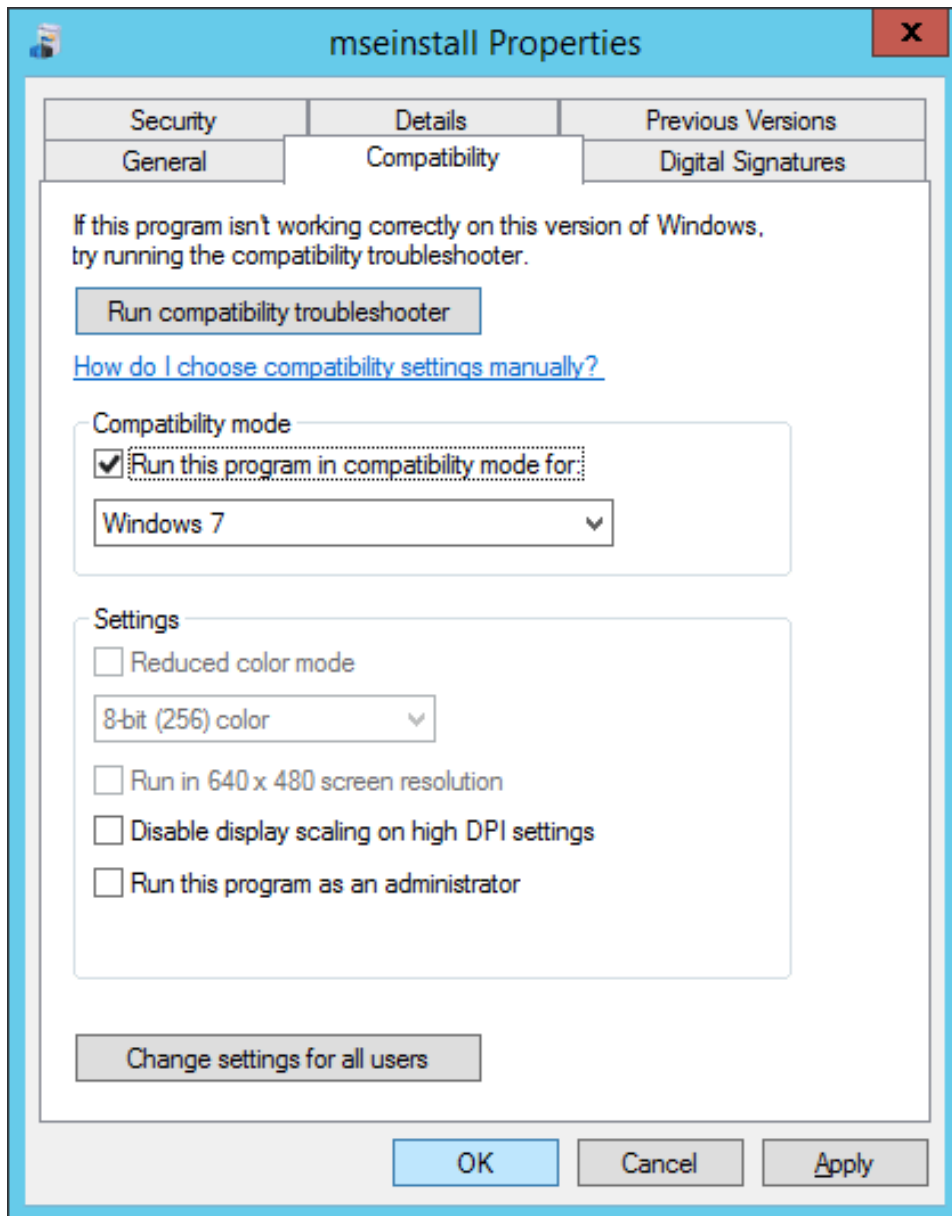
2. Save the mseinstall.exe file somewhere locally on the server, do not simply run it as by default the installation will fail with the following error:
3. Microsoft Security Essentials cannot be installed on your operating system.
- 4.
5. Your version of the Windows operating system is not supported by this program.
- 6.
7. Error code:0x8004FF04



8. To get around this error message, right click the mseinstall.exe file and select properties.

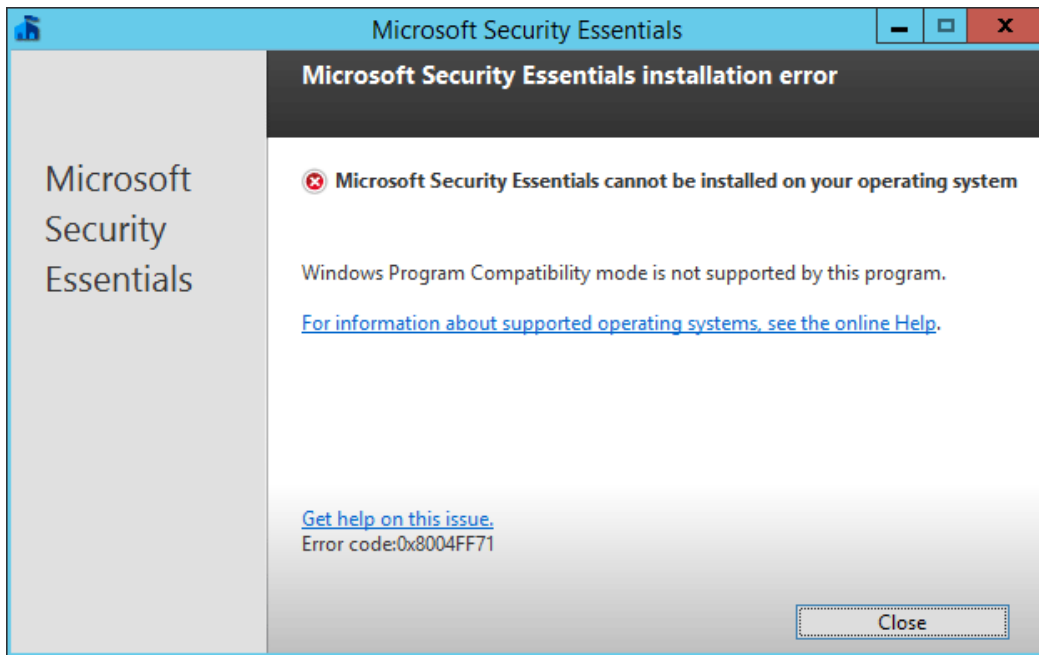


9. From the properties window, select the compatibility tab. Within the compatibility tab tick “Run this program in compatibility mode for:” under Compatibility Mode and select Windows 7 from the drop down box, as shown.

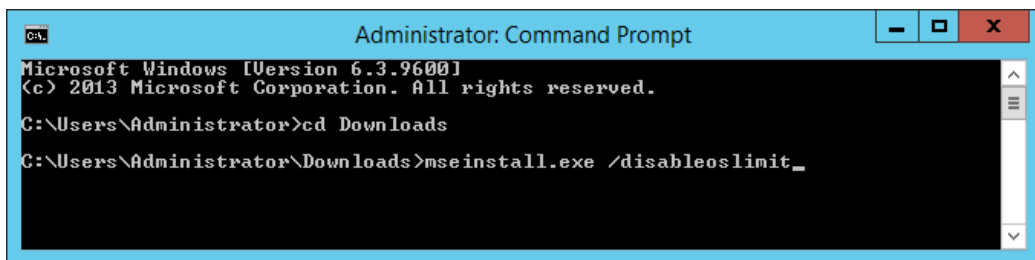


Click OK to continue.

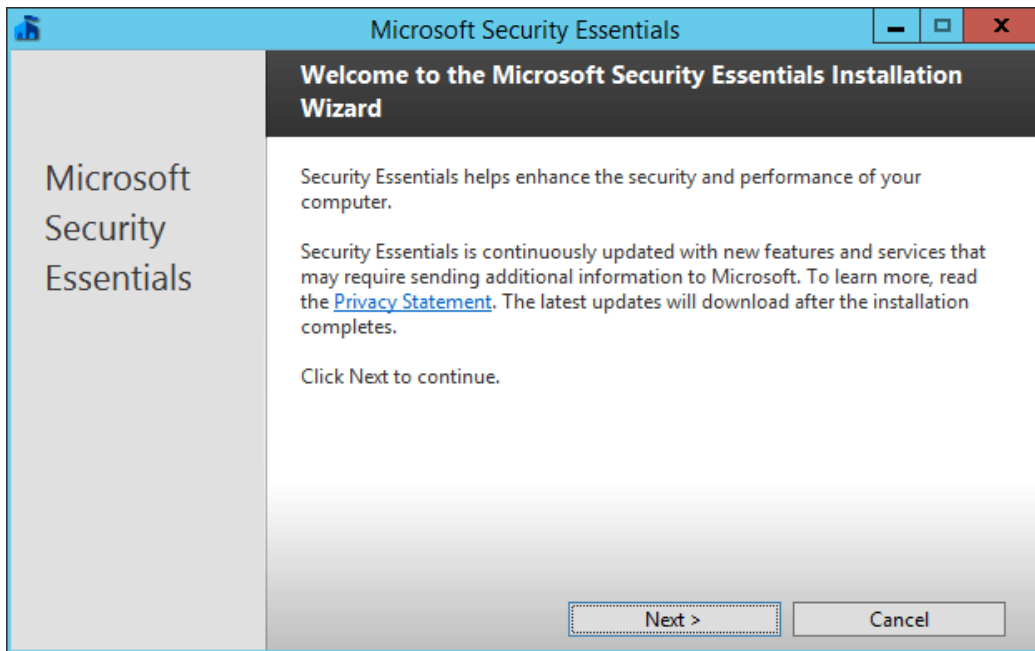
10. If you were to run the mseinstall.exe file at this point, you would receive a different error as shown below:
11. Microsoft Security Essentials cannot be installed on your operating system.
- 12.
13. Windows Program Compatibility mode is not supported by this program.
- 14.
15. Error code:0x8004FF71



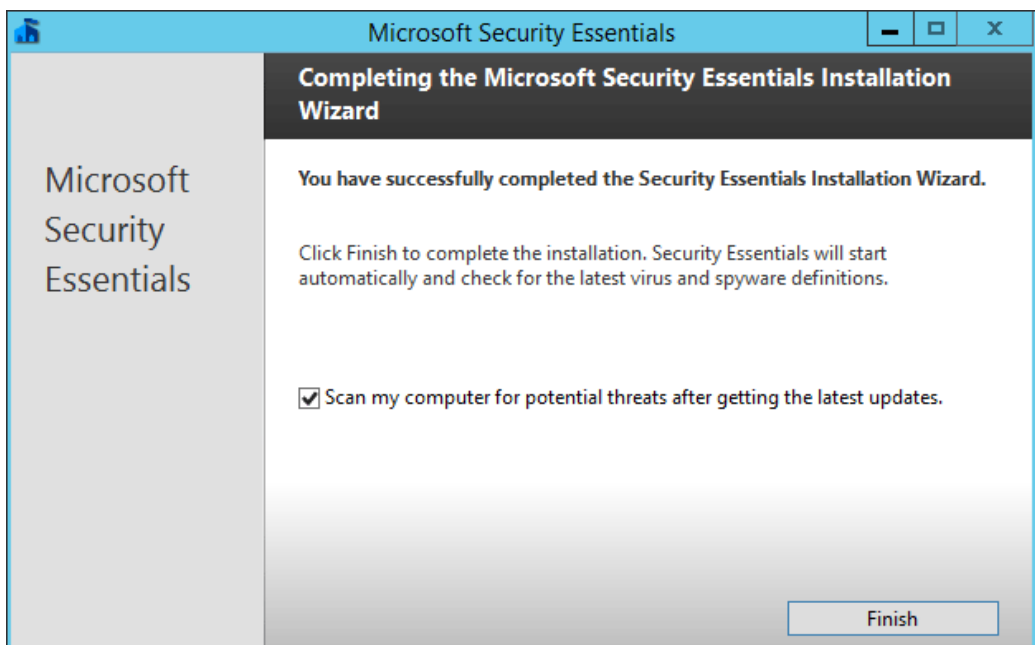
In order to resolve this, run command prompt as administrator and enter the folder where the mseinstall.exe file is located. Run the mseinstall.exe file with the /disableoslimit flag on the end as shown below.



16. The installation wizard should now correctly open and Microsoft Security Essentials can now be installed and will proceed without the previous error messages, click Next to continue and work through the installation wizard.



17. Once the installation has completed you can optionally update and perform a scan, this is recommended as the definitions database needs to be kept up to date to find newer threats. An Internet connection will be required to download any available definition updates through the application, however these can also come through from [Windows updates so if you have a WSUS server you can update from here as well](#). After updating a quick scan will take place.



You can select the Settings tab to modify when the weekly automatic scheduled scan takes place, by default a quick scan is set to run every Sunday at 2am and will not use more than 50% of the available CPU resources.

